

ROSE CLASSIFICATIONS

Bunch



To be viewed from the front. When exhibiting Stems, blooms should be individually spaced, even in size and not touching. This is not a criterion when Cuts are used.

Bowl



To be viewed from the front. When exhibiting Stems, blooms should be individually spaced, even in size and not touching. This is not a criterion when Cuts are used.



The Rose Society of South Australia Inc

An Easy Guide to **EXHIBITING ROSES**

2016

INTRODUCTION

You will need to obtain a current
Rose Show "Schedule"
and a copy of
The National Rose Society of Australia Inc.
"Judging Roses, A Handbook for Judges"
to gain maximum benefit from exhibiting your best roses.

These are available free to members.
Contact the RSSA
via website: www.sarose.org.au
or email: info@sarose.org.au

In particular, familiarise yourself with the definitions of a



Stem



Cut



Bud

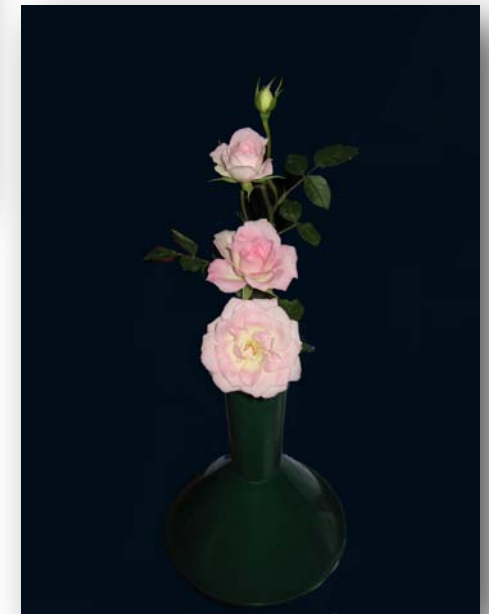
ROSE CLASSIFICATIONS

Multi Stages



3 Stages

Bud, mid stage and full bloom, bud must show colour.



4 Stages

ROSE CLASSIFICATIONS

Miniature Rose — Stem or Cut



Flowers may be single, semi or double and can be borne singly or in well balanced terminal clusters. Foliage should be in proportion.



Single Rose



Have one row of up to 5 petals, but may have up to 3 additional petals in a second row, and arranged within a circular outline, the stamens fresh and undamaged.

SELECTION OF ROSES

View your garden prior to entry closing date.

Your selections should be fresh blooms with good shape, colour and size according to their cultivar.

Good quality roses should not have mildew, rust, or black spot, and the foliage should not be damaged.

If the next few days are going to be hot or rainy, you may wish to pick your exhibit/s and store in a cool place. Otherwise, do not pick your roses yet.



NOMINATING CLASSES TO ENTER

Refer to the Judges Handbook if you are not sure what your roses are classified as.

Mark your Schedule with the names of the roses you have and how many entries you may wish to enter.



Contact the Nominations Secretary, as per the Rose Schedule, before the close of entries. Give the class number and how many entries for each class.

The Nominations Secretary will address any questions relating to nominations and exhibiting.

ROSE CLASSIFICATIONS

Shrub Rose



Should be typical of type having well formed petals of good substances and be at the stage of maximum possible beauty, fresh, brilliance and purity of colour. Exhibit should be gracefully balanced for size, height, width and colour combination.

Polyantha Rose



Floriferous with quite small flowers generally in the form of a spray or cluster, either single, semi or double flowers.

ROSE CLASSIFICATIONS

Full Bloom Rose



A rose which has reached its final stage of opening, is fresh, pure in colour, circular in outline, of good form and showing stamens. Stamens or centre of the rose to be fresh.

Floribunda Rose



Normally blooms in a cluster, having optimum number of fresh, open and part open flowers, gracefully arranged on the main stem. Fresh, brilliance of colour are important.

PICKING YOUR ROSES

Best to do this early morning on the day before the Show.

Take a bucket of water to the garden, along with your gloves and secateurs.

Cut your blooms with as long a stem as possible. Remove thorns eliminating leaf tear, but leave a minimum set of 3 leaves.

Re-cut the stem [1cm] and plunge into the bucket immediately and leave for at least 4 hours or overnight.



TRANSPORTING YOUR ROSES

Try to keep the roses from crushing or damaging en route to the Show by not overcrowding the buckets.

You may wish to bring your exhibits in other suitable containers to separate the blooms.



AT THE SHOW - EXHIBITING YOUR ROSES

Obtain your allotted exhibitor cards.

Familiarise yourself with the layout of the Show and where your entries will be placed.

Obtain the number of bottles (or vases) needed for your entries. Ensure the water level is to the top of the bottles, and obtain corks for later.

ROSE CLASSIFICATIONS

Exhibition Rose

Good form, freshness, size, substance, brilliance and purity of colour, and which at the time of judging is at the stage of maximum beauty.



Decorative Rose

HT, climbing HT, large flowered climber, grandiflora or climbing grandiflora with petals good substance, gracefully arranged in its most decorative phase; good condition, well balanced and in proportion to a strong graceful stem.



When placing the exhibit on the show bench, ensure it is the correct class number corresponding to the exhibit.

Take care to place the exhibit facing the front.

The exhibitor card should be in front of the exhibit with the exhibitor number faced down.



As a courtesy to other exhibitors, if your exhibit is tall or wide, place yours to the back of the allotted area.

Be careful to avoid contact with another person's exhibit, and under no circumstances move another person's exhibit. This can only be done by the Show Manager.

When using vases, you will need to soak enough cut-to-size oasis for your needs. This only takes a few minutes to soak when oasis is fully submerged in water.

Ensure there is a small amount of water in the bottom before placing the oasis into the vase.

Ensure there is a 1-2cm gap from the top of the oasis to the top of the vase to allow further watering.



Ideal



Not Ideal

Re-cut the stem before placing your exhibit into the bottle (vase).

Use a cork to secure the stem firmly in the bottle.
Ensure your exhibit is well in the water.
There should be only one rose stem protruding from the top of the bottle (vase), no leaf stem should come from the top of the bottle (vase).



Correctly staged



Incorrectly staged

FINAL OVERVIEW

On the reverse side of your exhibitor card, write the name of the cultivar. If not known, ask another exhibitor, or write "Unknown".

Have a final check of your exhibit to ensure tidy presentation. The bloom should be clean, and leaves should not be crushed, dirty or have splits or holes. These can be removed with care.

Check the exhibit is still in water.



(Cont'd)